

Dear Reader,

Before inviting you to read the second edition of the Primo Marine Newsletter we first and foremost would like to thank you for the encouraging feedback we have received from so many of you on the first edition!

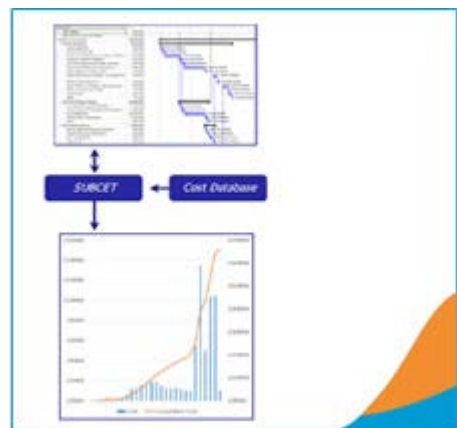
Our special interest areas in the second edition are SUBCET - a Subsea Cost Evaluation Tool, MetOcean Support, work performed in the area of GIS (Geographic Information Systems) and last but not least our involvement and progress made in the Luchterduinen windfarm project.

By the way: in June we will be attending the WINDFORCE 2014 conference in Bremen and, of course, hope to see you there (stand E11, hall 5).

Enjoy reading and, please, continue to share your thoughts. Should you wish to receive further information please contact Susanne Kovar at susanne.kovar@primo-marine.com.

Your Primo Marine Team

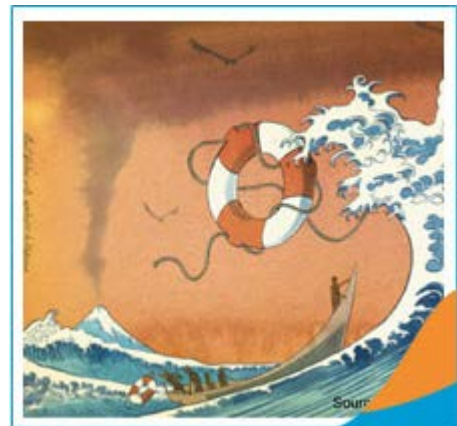
Rotterdam - May, 2014



SUBCET - Subsea Cost Evaluation Tool

Especially for the development and installation of marine power transmission cables the proprietary Subsea Cost Evaluation Tool (SUBCET) has been developed. SUBCET links schedules and unit costs with our in-house cost database to efficiently develop cost estimates. These can be used to perform cost/schedule risk analyses using @Risk for evaluating development cost and ranking.

A key benefit of SUBCET is that it allows real-time updates of task durations and unit rates/costs to perform sensitivity analysis on cost. SUBCET is in use as a module in the oil and gas industry and has been developed by Consub (www.consub.com). For further information please contact: jaap.smit@primo-marine.com and/or download our Product Reference Sheet: ... [Download](#)



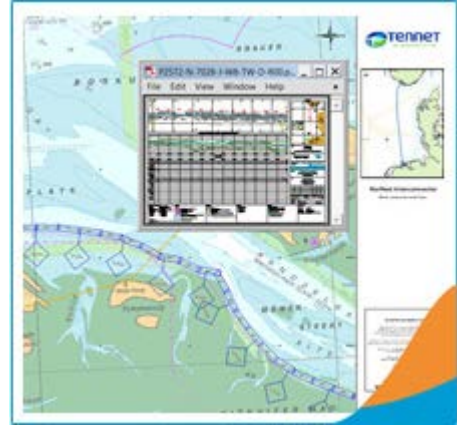
Source:
<http://developmentalpathways.blogspot.nl/>

Metocean Support (Metocean = Meteorological & Oceanographical)

High quality metocean data (wind, waves, currents, ice, etc.) and data analyses (e.g. weather windows) are extremely important for marine and coastal projects. They are widely used for planning, design and installation of marine assets and coastal infrastructure, and strongly influence the technical integrity, project scheduling and OPEX costs.

The data originates from field equipment (buoys, drifters, etc.), satellite mounted equipment, and/or computer models in both hindcast or forecast mode. Workability and weather windows analyses are part of the enhanced metocean analyses, making use of time series of data.

Our in-house metocean specialists have gathered wide experience in the collection and analyses of metocean data. For further information please contact Miriam van Endt at miriam.van.endt@primo-marine.com and/or download our Product Reference Sheet " [Download](#)



GIS (Geographic Information Systems)

The storage of hardcopy documentation is considered something from the past, digital files (reports, charts, documents) are to be archived using software tools as for example ESRI's ArcGIS. The geographic background (sea maps, cable location, etc.) allows the user to access the archived data right 'on the spot'.

Primo Marine was asked to incorporate the extensive archives from BritNed and NorNed interconnectors in geo-referenced ArcGIS environment for easy access and data evaluation and we were more than happy to perform this large scale task.

For further information please contact: Alexander.vanderKley@primo-marine.com and/or download our relevant Product Reference Sheet. [Download](#)



Mitsubishi Corporation & Eneco commenced with the installation of their Eneco Luchterduinen wind farm 23 km off the coast of Noordwijk in The Netherlands. Our offshore representatives assist with the offshore campaigns. The rock dump campaign, the first activity, has started in April. We wish the project team as well as the installation contractor, van Oord Offshore Wind Projects, a lot of success with this project.









Primo Marine will be attending the WINDFORCE 2014 conference taking place in Bremen from June 17 to 19, 2014. Please visit us at our stand E11 in hall 5.

Career Opportunities:

We are looking for a Project Manager for the execution of engineering projects in the area of marine power transmission cables, offshore oil & gas pipelines and dredging. Are you interested in this vacancy? Please click here in order to have a full look at the job profile: [Download](#)

Here a Selection of Projects Executed for our Clients:

-  Expert review of burial assessment of the HelWin2 HVDC and HVAC cable systems, for TenneT Offshore GmbH.
-  Presenting a MetOcean Workshop regarding "offshore workability and MetOcean conditions" for operational staff of TenneT Offshore GmbH & ABB OEC.
-  Conducting a "Constructability Assessment of Proposed HDD Landfall" for the IFA2 Interconnector for Réseau de Transport d'Électricité (Rte).
-  Design and development of a GIS system for the NorNed cable for TenneT TSO BV.
-  Performing a trenching study for the COBRA cable (Waddenzee Area) together with ACRB for TenneT TSO BV.
-  Development of the shallow water survey tender package for the NorNed cable for TenneT TSO BV.



Download Area

A variety of information about the support and expertise we offer can be obtained from our website. Please go to our download area:



Short Profile of Primo Marine

Primo Marine is an independent privately owned engineering company. We focus on offshore cables (export, infield, umbilical), offshore pipelines and dredging. Installation engineering, project management, procurement and tender support & expert services are our areas of expertise and we are covering the whole lifecycle of the cable/pipeline: Pre-construction – Installation – Operational – Maintenance, Repair – Decommissioning.



Primo Marine is a member of the International Marine Contractors Association (IMCA) and greatly supports the use of IMCA guidelines.

Primo Marine, Haringvliet 88, 3011 TG Rotterdam, The Netherlands

If you no longer wish to receive commercial e-mail messages from susanne.kovar@primo-marine.com, please reply to this e-mail with subject: Remove